



UNIVERSITY OF CAMBRIDGE INTERNATIONAL EXAMINATIONS  
General Certificate of Education Ordinary Level

CANDIDATE  
NAME

CENTRE  
NUMBER

--	--	--	--	--

CANDIDATE  
NUMBER

--	--	--	--



**BIOLOGY**

**5090/61**

Paper 6 Alternative to Practical

**October/November 2010**

**1 hour**

Candidates answer on the Question Paper.

No Additional Materials are required.

**READ THESE INSTRUCTIONS FIRST**

Write your Centre number, candidate number and name on all the work you hand in.  
Write in dark blue or black pen in the spaces provided on the Question Paper.  
You may use a soft pencil for any diagrams, graphs or rough working.  
Do not use staples, paper clips, highlighters, glue or correction fluid.  
**DO NOT WRITE IN ANY BARCODES.**

Answer **all** questions.  
At the end of the examination, fasten all your work securely together.  
The number of marks is given in brackets [ ] at the end of each question or part question.

For Examiner's Use	
1	
2	
3	
<b>Total</b>	

This document consists of **8** printed pages.



1 An investigation was carried out to show the effect of increasing light intensity on the rate of photosynthesis.

For  
Examiner's  
Use

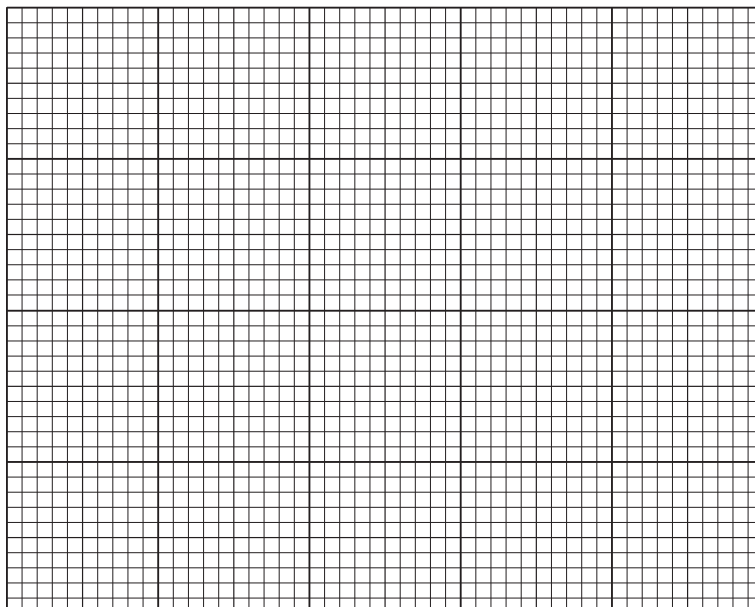
- The rate was measured by recording the amount of carbon dioxide that was absorbed or released.
- Other factors were kept constant.

Table 1.1 shows the results that were obtained.

**Table 1.1**

light intensity /arbitrary units	carbon dioxide intake /arbitrary units
0	-0.5
2	1.0
4	2.5
6	4.0
8	4.5
12	4.8
16	4.7

(a) (i) Construct a graph on the grid below, from the figures in Table 1.1.



[5]

(ii) Explain how the graph demonstrates the concept of limiting factors.

.....  
.....  
.....  
.....  
..... [4]

(iii) From your graph determine the light intensity when no carbon dioxide is taken in or released.

..... [1]

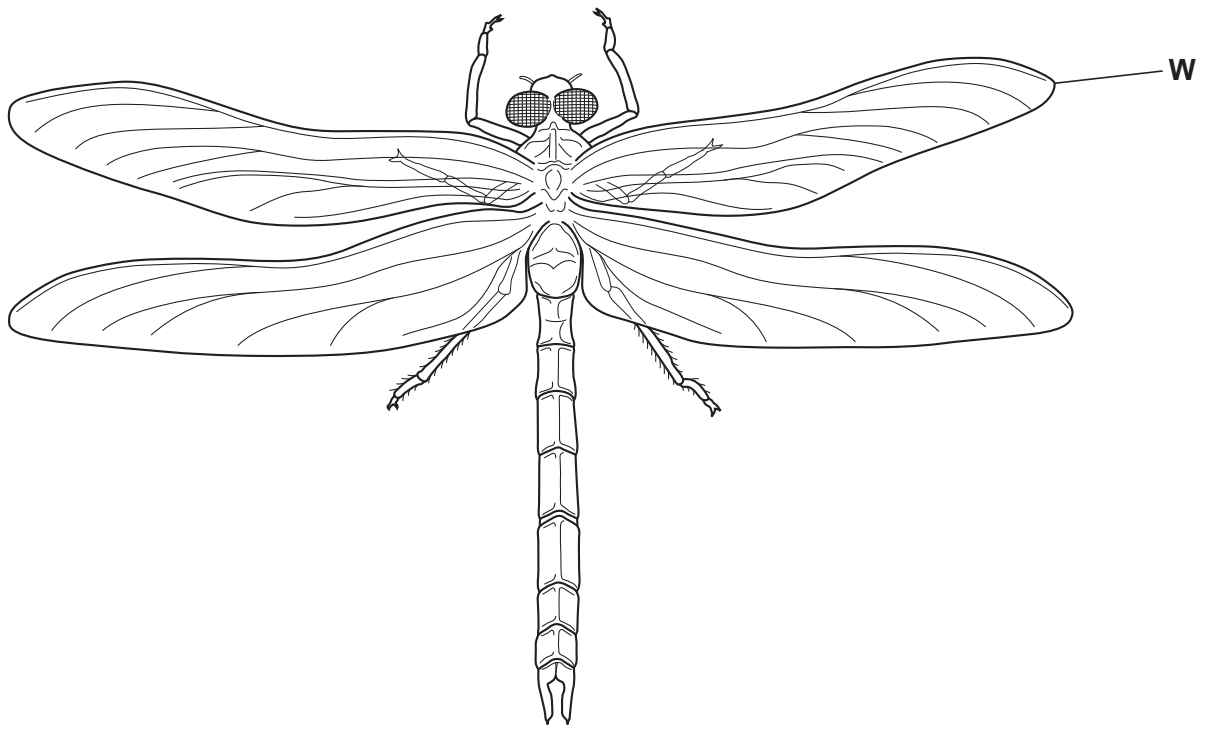
(iv) Explain why carbon dioxide is neither taken in nor released at this light intensity.

.....  
.....  
..... [2]

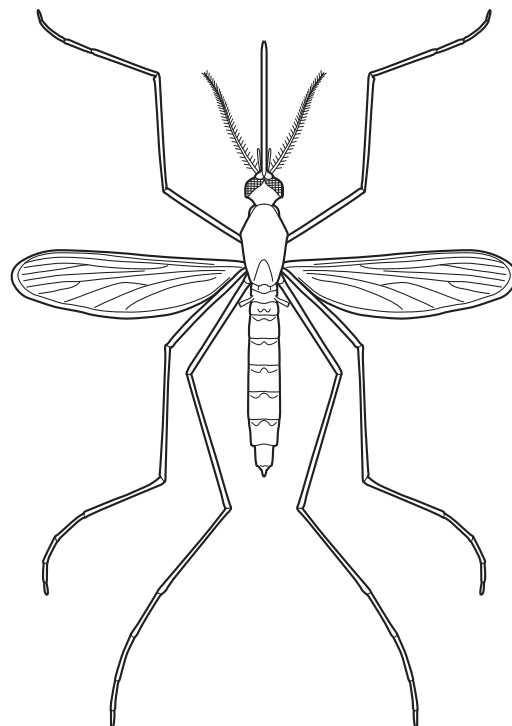
[Total: 12]

For  
Examiner's  
Use

2 Figs. 2.1 and 2.2 show two different insects.



**Fig. 2.1**



**Fig. 2.2** (Not drawn to the same scale)

(a) List four **visible** features that are the same in both insects.

- 1. ....
- 2. ....
- 3. ....
- 4. .... [4]

(b) Complete Table 2.1 with four pairs of differences that are **visible** in these insects.

**Table 2.1**

	feature in <b>Fig. 2.1</b>	same feature in <b>Fig. 2.2</b>
1		
2		
3		
4		

[4]

(c) In the specimen from which Fig. 2.1 was made, the length of the wing labelled **W** was 40 mm.

Calculate the magnification of the insect shown in Fig. 2.1.

Show your working clearly.

magnification = ..... [3]

[Total: 11]

3 Fig. 3.1 shows a germinating bean seed.

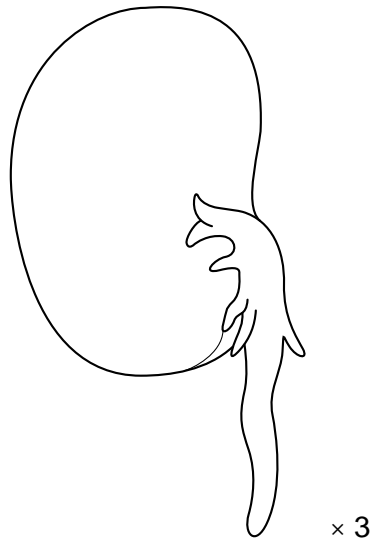


Fig. 3.1

(a) Describe how you would demonstrate that the seed contains:

(i) starch

.....

.....

.....

(ii) protein.

.....

.....

.....

[4]

(b) (i) Explain how the protein is taken from the store in the seed to where it is needed for growth.

.....

.....

.....

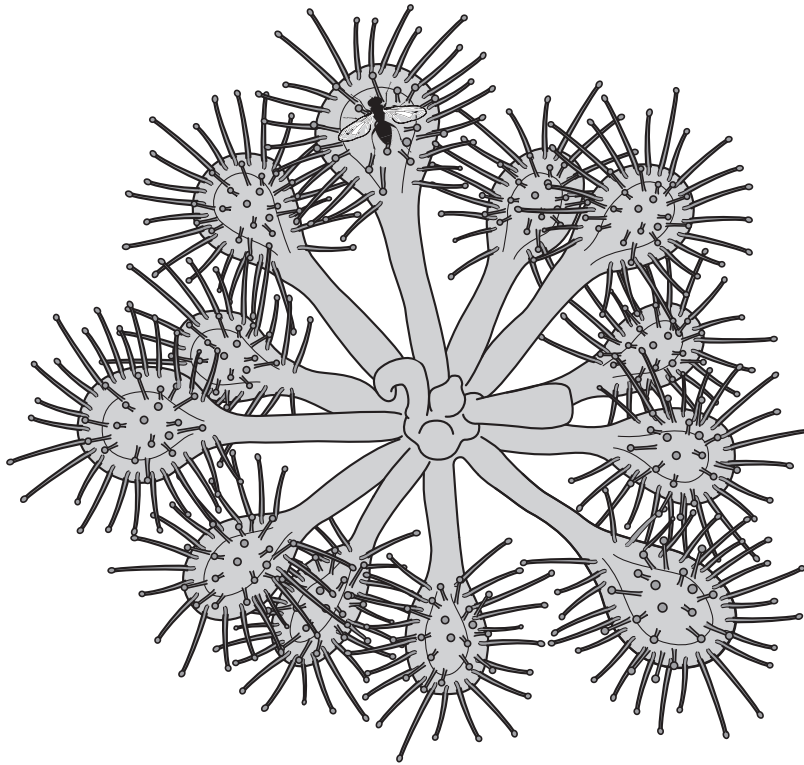
.....

(ii) Draw arrows on Fig. 3.1 to show the direction of this movement.

[4]

(c) Fig. 3.2 shows a plant that is able to grow in soil that is short of nitrates, because it can produce protein in an unusual way.

For  
Examiner's  
Use



**Fig. 3.2**

- The leaves attract insects.
- The insects become stuck to the leaves.
- Secretion of enzymes takes place from glands on the leaf.

Suggest how this plant produces protein from the trapped insects.

.....

.....

.....

..... [3]

(d) (i) State how nitrates are of benefit to green plants.

For  
Examiner's  
Use

.....

.....

..... [2]

(ii) Using apparatus like that shown in Fig. 3.3, outline how you could show the effect of nitrates on plant growth.

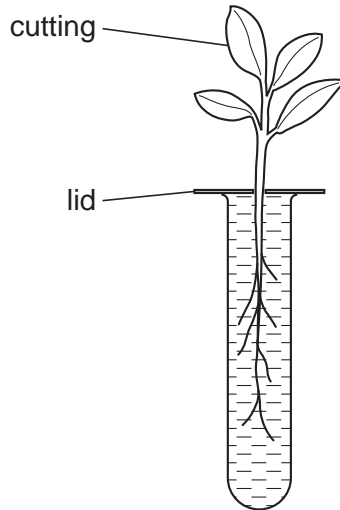


Fig. 3.3

.....

.....

.....

.....

.....

.....

..... [4]

[Total: 17]

Permission to reproduce items where third-party owned material protected by copyright is included has been sought and cleared where possible. Every reasonable effort has been made by the publisher (UCLES) to trace copyright holders, but if any items requiring clearance have unwittingly been included, the publisher will be pleased to make amends at the earliest possible opportunity.

University of Cambridge International Examinations is part of the Cambridge Assessment Group. Cambridge Assessment is the brand name of University of Cambridge Local Examinations Syndicate (UCLES), which is itself a department of the University of Cambridge.